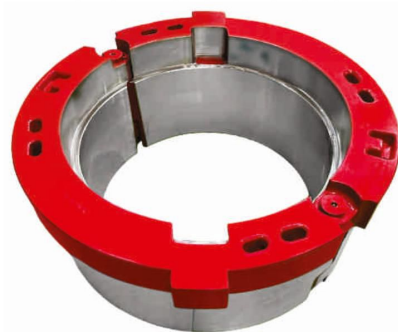


ADAPTER RING

Autobahn produces a diverse selection of Rotary Adapter Rings or Reducer Bushings designed for 75.1/2", 60.1/2", 49.1/2" and 37.1/2" Rotary Tables. These adapter rings serve the purpose of reducing the rotary bore size. They come in both solid and hinged designs, offering versatility in application. Additionally, the configurations of these rings can vary from one rotary maker to another or even from one brand to a different brand (e.g., Oilwell to National). Autobahn is API-7K Certified for Rotary Bushings which includes Adapter Rings and these Adapter Rings are made strictly following the latest edition of API-7K specifications.



Adapter Ring
Figure No. 16

Types of Adapter Rings:

S.No.	Reducing Size	Type	Rated Load (sTon)	Part No.
1.	NOV 75.1/2" to NOV 60.1/2" RT	Hinged	1500	6001
2.	NOV 60.1/2" to National 49.1/2" RT	Hinged	1500	6002
3.	From National 49.1/2" to National 37.1/2" RT	Hinged	1500	6003
4.	From National 49.1/2" to National 37.1/2" RT	Solid	1500	6004
5.	From National 37.1/2" to API Standard 27.1/2" RT	Hinged	750	6005
6.	From Oilwell 37.1/2" to API Standard 27.1/2" RT	Hinged	750	6006
7.	From EMSCO 37.1/2" to API Standard 27.1/2" RT	Hinged	750	6007

Note: Customized Adapter Rings are also available upon request.

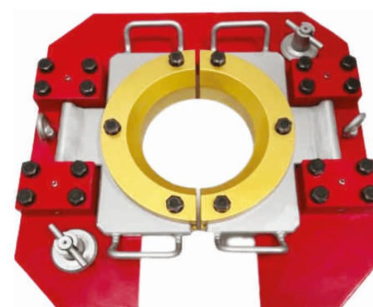
WEAR GUIDE ASSEMBLY

The Wear Guide Assembly is essential for minimizing wear and tear on Master Bushings and Insert Bowls during drilling operations, particularly when using a top drive. It plays a crucial role in protecting the drilling string by centralizing it, thereby reducing the risk of damage to the insert bowls throughout the drilling or tripping process.

This assembly is specifically designed to be mounted directly into the pin drive locations on 27.1/2" & 37.1/2" Master Bushings. With the assistance of Insert Sets, the Wear Guide Assembly can accommodate tubular sizes ranging from 3.1/2" to 6.5/8".

Technical Specification:

S.No.	Pipe Size	Part No.
1.	3.1/2"-5"	65850
2.	5.1/2"-6.5/8"	65851



Wear Guide Assembly
Figure No. 17